

BRASS BALL VALVE ACS PN25 15S SERIES 4MS

4MS brass ball valves semi-full bore with large flat sealing face for drinking water; heating, watering, cooling and water distribution.

PTFE packing and anti blow-out stem.

Flat black reversible steel handle with Dacromet coating for a better corrosive resistance.

Stainless steel ball from DN1" to 2"1/2.



Size : DN3/8" to DN3"

Connection : Male, Female BSP

Min Temperature : -10°C

Max Temperature : +120°C

Max Pressure : 25 Bars (up to DN1")

Specifications : Anti blow-out stem

PTFE packing

Semi full bore

Materials : Brass EN 12165-CW617N-4MS

BRASS BALL VALVE ACS PN25 15S SERIES 4MS**SPECIFICATIONS :**

- Brass CW617N according to EN 12165 CW617 4MS
- Semi full bore
- Anti blow-out stem
- AISI 304 ball from DN1" to DN2"1/2
- Eco concept : Arc Ball without chroming and no plating on the body
- PTFE packing
- Flat black reversible steel handle or aluminium butterfly handle
- Handle and handle nut Dacromet coated 11-15 µm (salt spray protection)
- Marking body " 15S ", fabrication date and logo
- ACS number and 4MS on the handle
- Large flat sealing face

USE :

- Drinking water, heating, watering, cooling and water distribution
- Min temperature Ts : - 10°C
- Max temperature Ts :+ 120°C
- Max pressure Ps : 25 bars up to DN 1" , 20 bars in 1"1/4 and 1"1/2 , 16 bars in 2" and 10 bars over

RANGE :

- Female / Female with red flat steel handle **Ref. 515** from DN3/8" to 3"



- Female / Female with red butterfly handle **Ref. 516** from DN3/8" to 1"



- Male / Female with red flat steel handle **Ref. 562** from DN3/8" to 2"



- Male / Female with red butterfly handle **Ref. 563** from DN3/8" to 1"

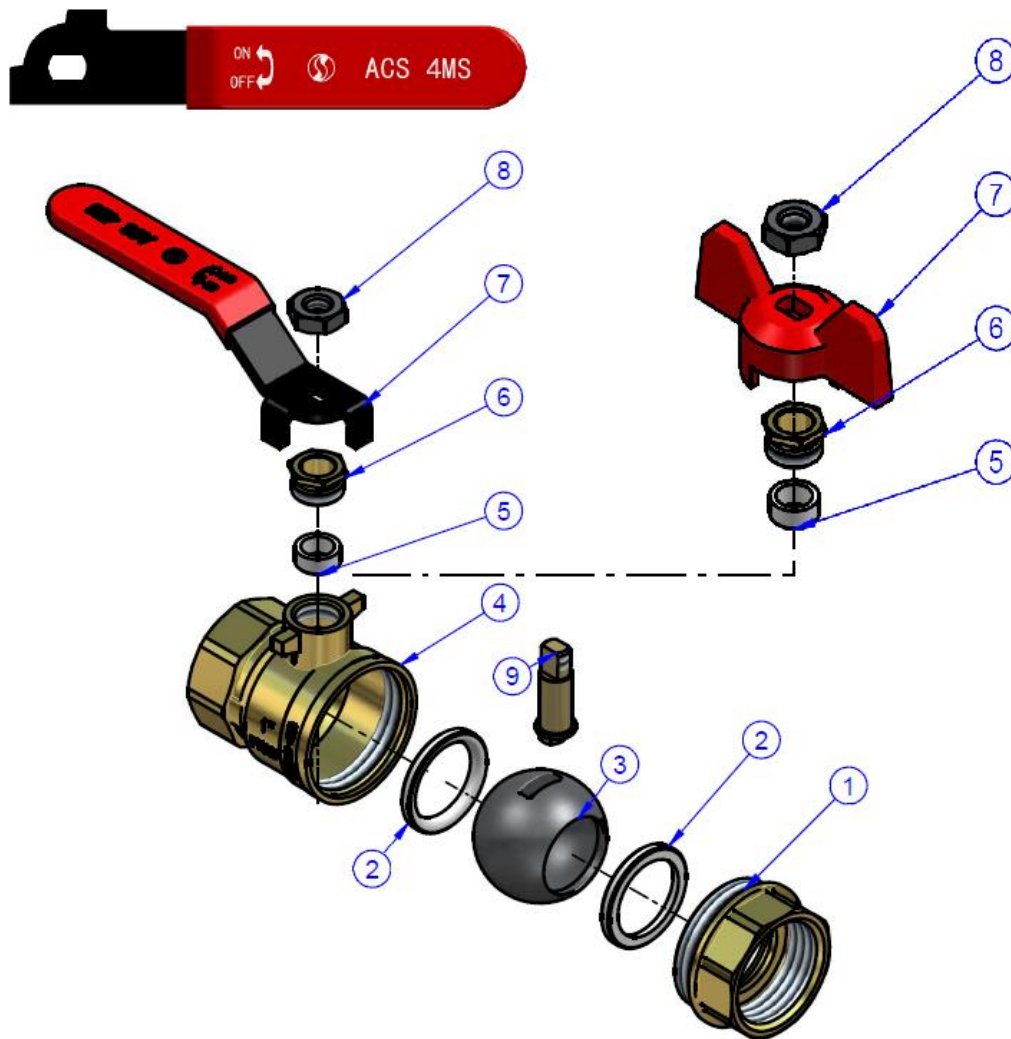


- Male / Male with red flat steel handle **Ref. 572** from DN3/8" to 2"



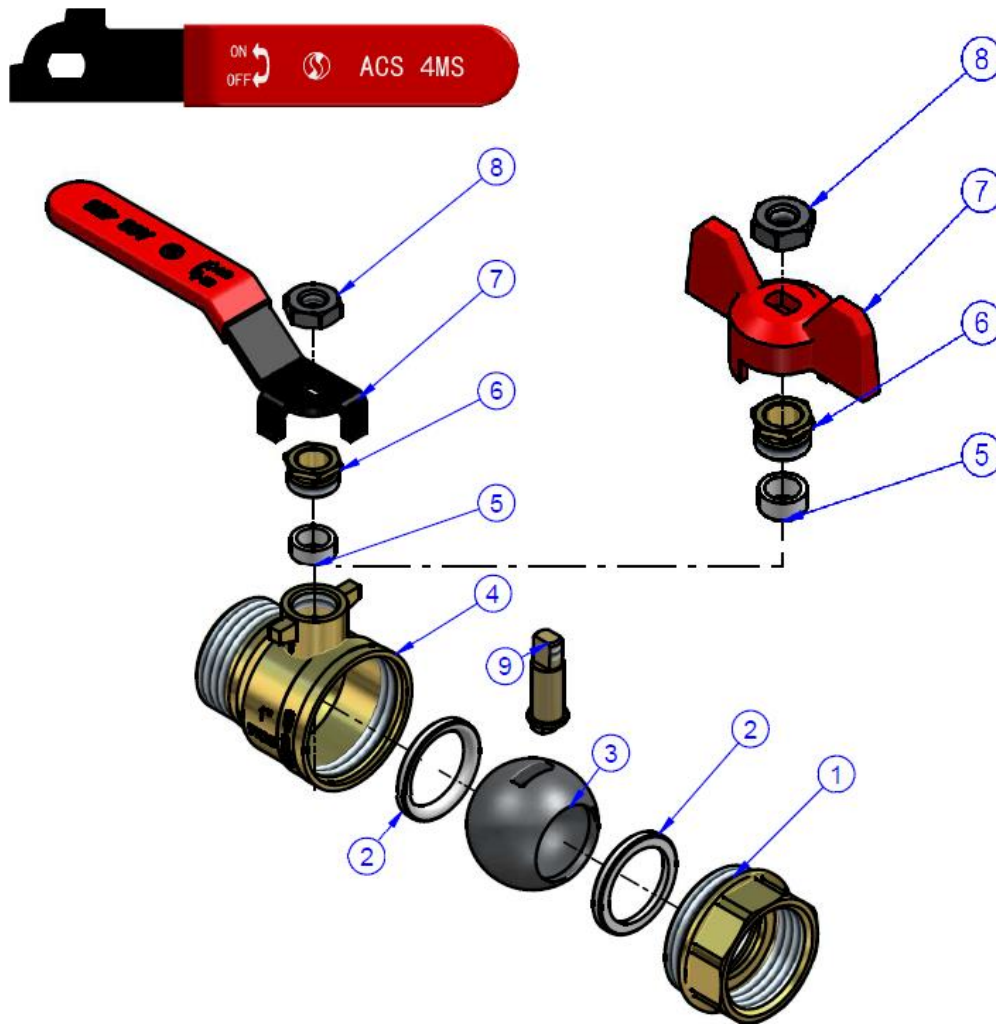
- Male / Male with red butterfly handle **Ref. 573** from DN3/8" to 1"
- Female / Female with drain and red flat steel handle **Ref. 574** from DN1/2" to 2"
- Female / Female with drain and red butterfly handle **Ref. 575** from DN1/2" to 1"

BRASS BALL VALVE ACS PN25 15S SERIES 4MS

MATERIALS FEMALE – FEMALE TYPES :

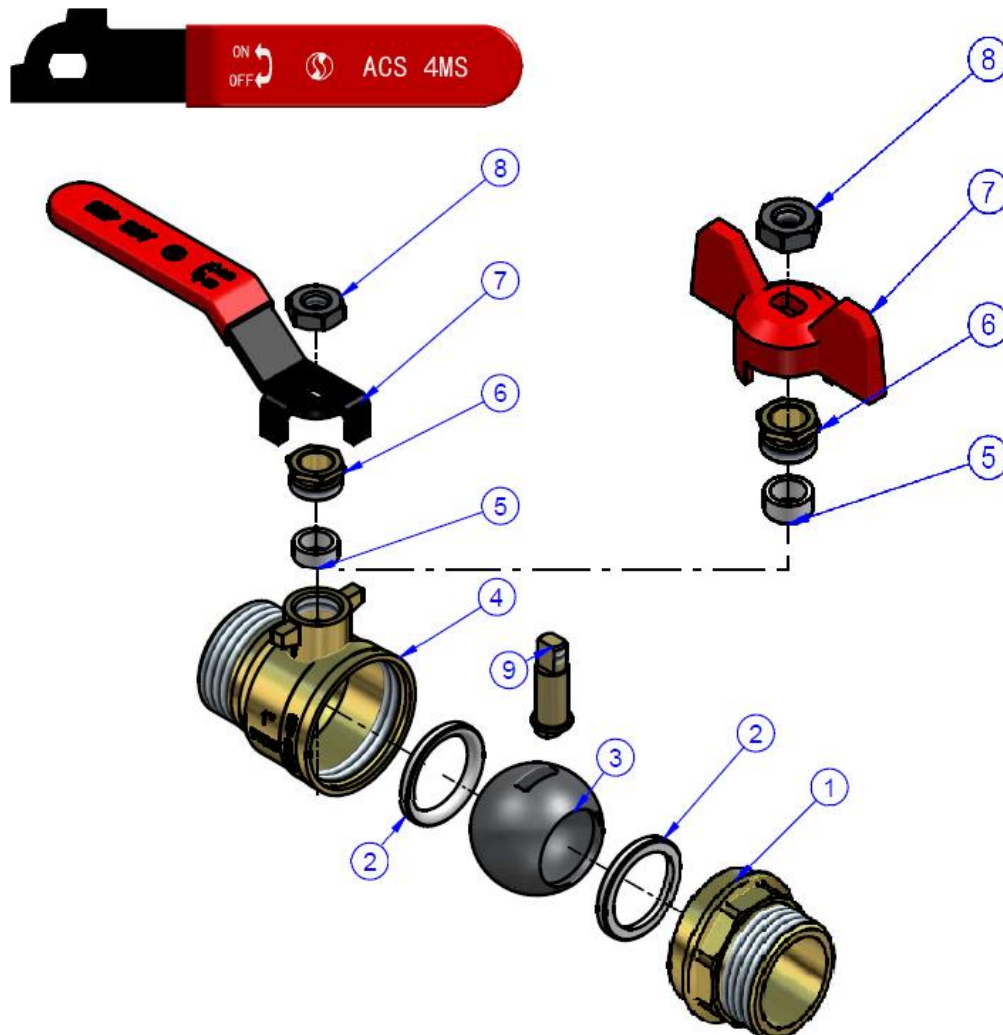
Item	Designation	Materials Ref. 515		Materials Ref. 516
1	Bonnet	Brass CW617N-4MS according to EN 12165		
2	Seat	PTFE		
3	Ball DN1/2"-3/4"	Chromed brass		
3	Ball DN1"-2"1/2"	AISI 304		
4	Body	Brass CW617N-4MS according to EN 12165		
5	Packing	PTFE		
6	Packing nut	Brass		
7	Handle	Steel with black Dacromet coating		Aluminium
	Handle cover	Plastic		-
8	Handle nut	Steel with Dacromet coating		
9	Stem	Brass		

BRASS BALL VALVE ACS PN25 15S SERIES 4MS

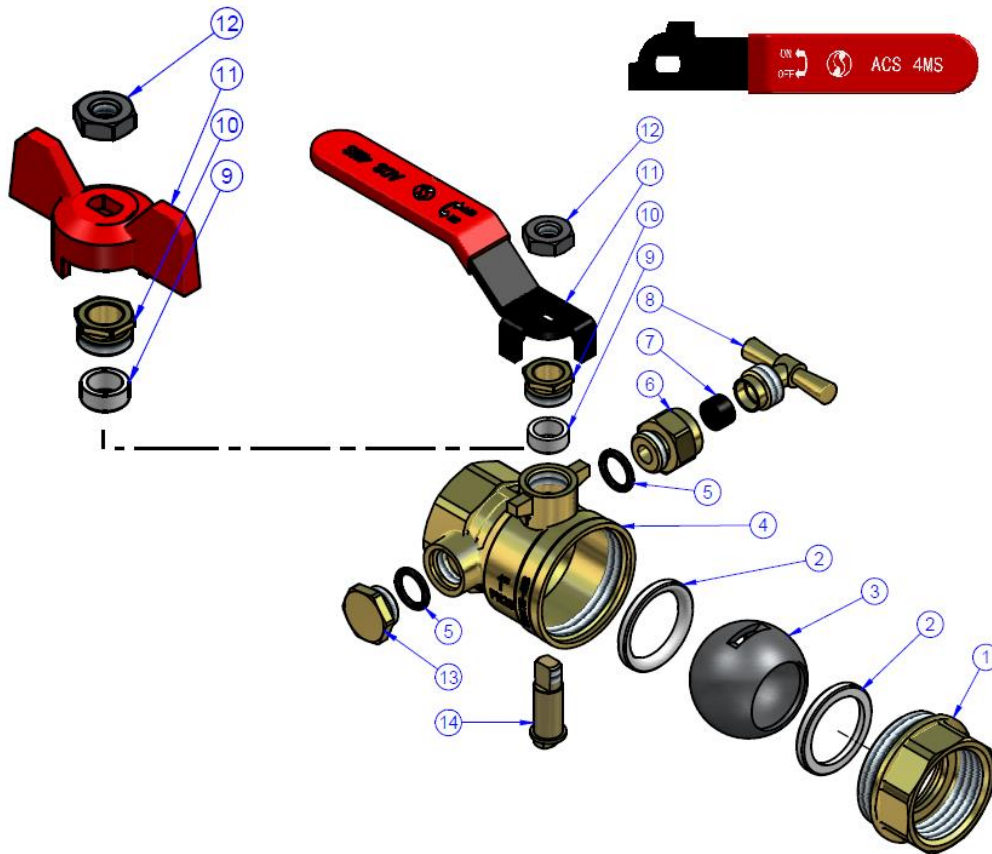
MATERIALS MALE – FEMALE TYPES :

Item	Designation	Materials Ref. 562	Materials Ref. 563
1	Bonnet	Brass CW617N-4MS according to EN 12165	
2	Seat	PTFE	
3	Ball DN1/2"-3/4"	Chromed brass	
3	Ball DN1"-2"1/2	AISI 304	
4	Body	Brass CW617N-4MS according to EN 12165	
5	Packing	PTFE	
6	Packing nut	Brass	
7	Handle	Steel with black Dacromet coating	Aluminium
	Handle cover	Plastic	-
8	Handle nut	Steel with Dacromet coating	
9	Stem	Brass	

BRASS BALL VALVE ACS PN25 15S SERIES 4MS

MATERIALS MALE – MALE TYPES :

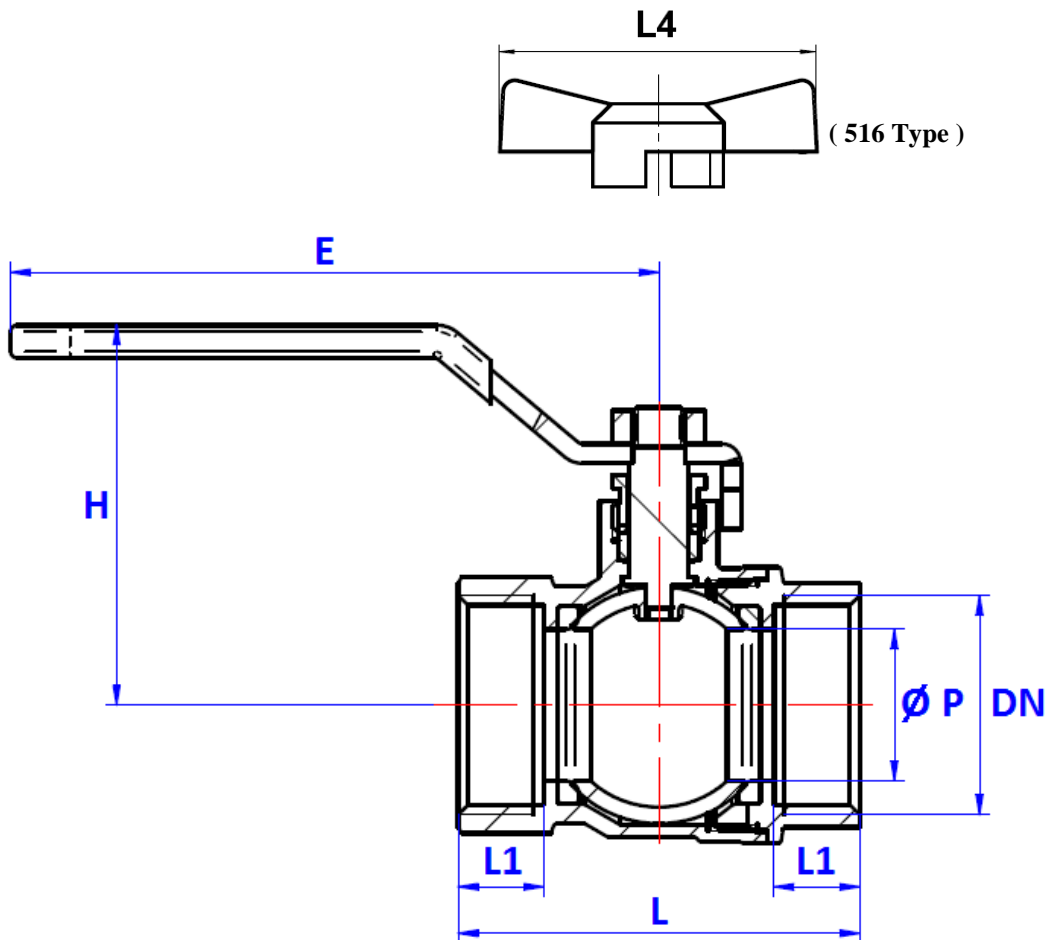
Item	Designation	Materials Ref. 572	Materials Ref. 573
1	Bonnet	Brass CW617N-4MS according to EN 12165	
2	Seat	PTFE	
3	Ball DN1/2"-3/4"	Chromed brass	
3	Ball DN1"-2"1/2	AISI 304	
4	Body	Brass CW617N-4MS according to EN 12165	
5	Packing	PTFE	
6	Packing nut	Brass	
7	Handle	Steel with black Dacromet coating	Aluminium
	Handle cover	Plastic	-
8	Handle nut	Steel with Dacromet coating	
9	Stem	Brass	

BRASS BALL VALVE ACS PN25 15S SERIES 4MS
MATERIALS FEMALE – FEMALE WITH DRAIN TYPES :


Item	Designation	Materials Ref. 574		Materials Ref. 575
1	Bonnet	Brass CW617N-4MS according to EN 12165		
2	Seat	PTFE		
3	Ball DN1/2"-3/4"	Chromed brass		
3	Ball DN1"-2"1/2	AISI 304		
4	Body	Brass CW617N-4MS according to EN 12165		
5	O ring	NBR		
6	Connector	Brass CW617N-4MS according to EN 12165		
7	Gasket	NBR		
8	Lever	Brass CW617N-4MS according to EN 12165		
9	Packing	PTFE		
10	Packing nut	Brass		
11	Handle	Steel with black Dacromet coating	Aluminium	
	Handle cover	Plastic	-	
12	Handle nut	Steel with Dacromet coating		
13	Plug	Brass CW617N-4MS according to EN 12165		
14	Stem	Brass		

BRASS BALL VALVE ACS PN25 15S SERIES 4MS

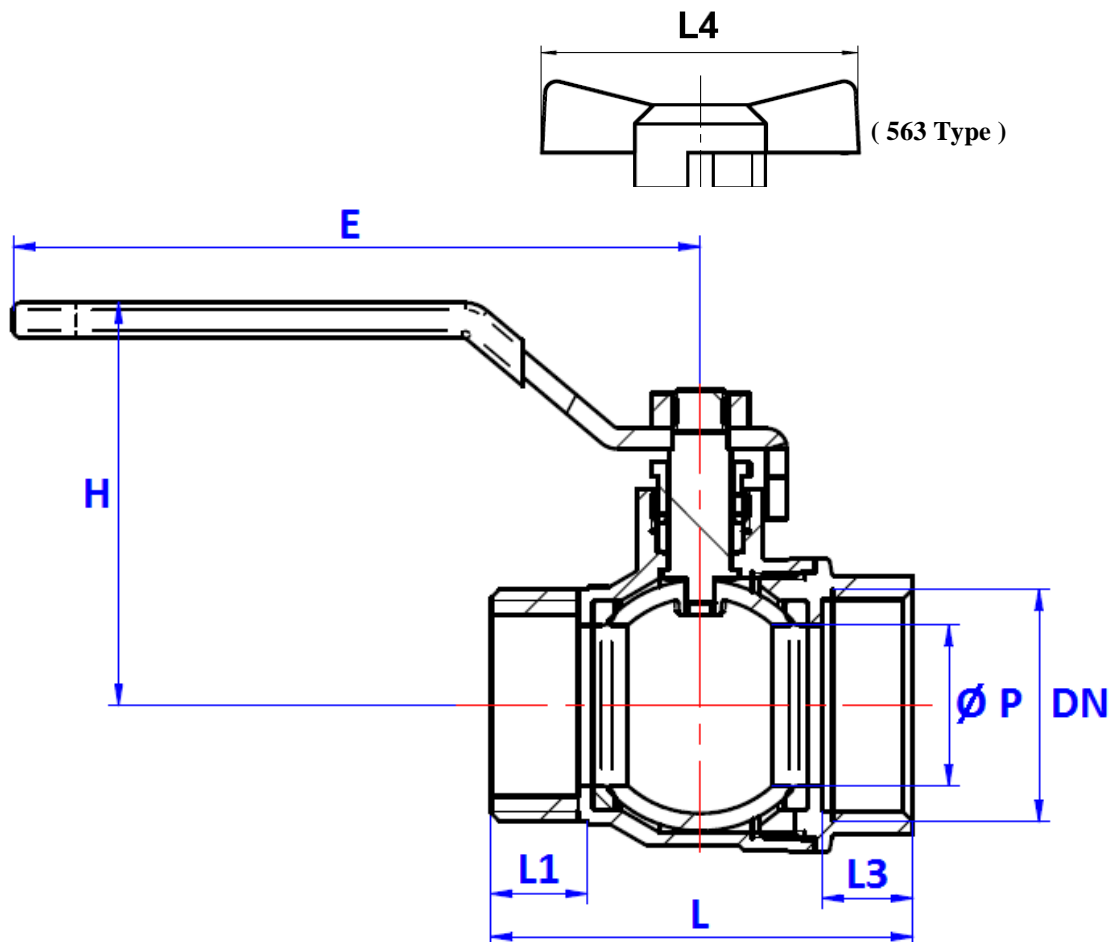
FEMALE / FEMALE SIZE Ref. 515 / 516 (in mm) :



Ref.	DN	3/8"	1/2"	3/4"	1"	1"1/4	1"1/2	2"	2"1/2	3"
515 / 516	Ø P	10	13.5	18	23	27	36	45	50	63
	L	44	43	50	61	69	81	95	111	133
	L1	10	10.7	11	13	14.5	15	16.5	21	23
515	E	81	79		98.5	114.5	140		142	236
	H	41.1	43.3	46.6	57.7	60.5	77.5	83	97.5	113
	Weight (Kg)	0.13	0.13	0.18	0.32	0.47	0.75	1.10	1.68	2.82
516	L4	50.5		50.5	63	-	-	-	-	
	H	33.4	36.5	40	52	-	-	-	-	
	Weight (Kg)	0.1	0.11	0.15	0.29	-	-	-	-	

BRASS BALL VALVE ACS PN25 15S SERIES 4MS

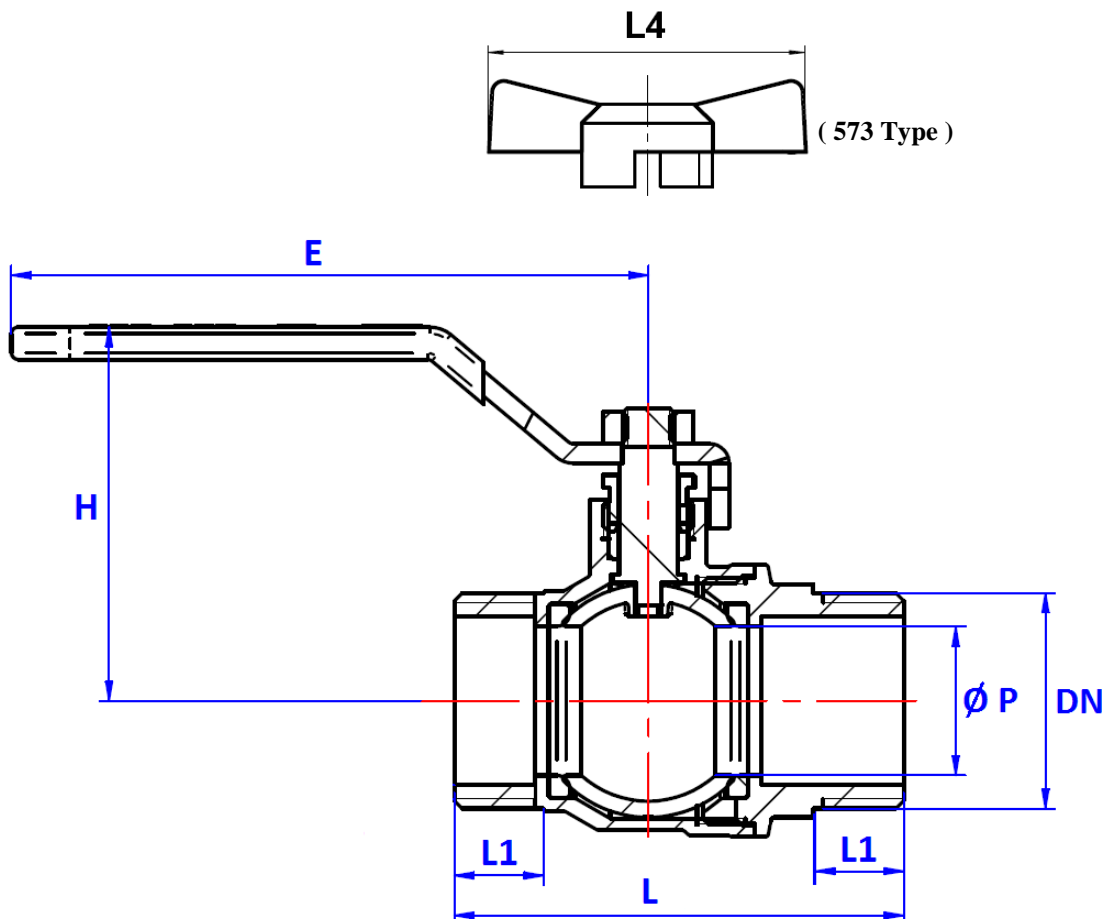
MALE / FEMALE SIZE Ref. 562 / 563 (in mm) :



Ref.	DN	3/8"	1/2"	3/4"	1"	1"1/4	1"1/2	2"
562 / 563	Ø P	10	13.5	18	23	27	36	45
	L	43.5	42	50.5	60.5	67.5	82	95.5
	L1	8.5	10	12	14	15.5	16	18
	L3	10	10.7	11	13	14.5	15	16.5
562	E	81	79		98.5	114.5	140	
	H	41.1	43.3	46.6	57.7	60.5	77.5	83
	Weight (Kg)	0.13	0.13	0.17	0.31	0.44	0.72	1.03
563	L4	50.5		50.5	63	-	-	-
	H	33.4	36.5	40	52	-	-	-
	Weight (Kg)	0.1	0.11	0.15	0.28	-	-	-

BRASS BALL VALVE ACS PN25 15S SERIES 4MS

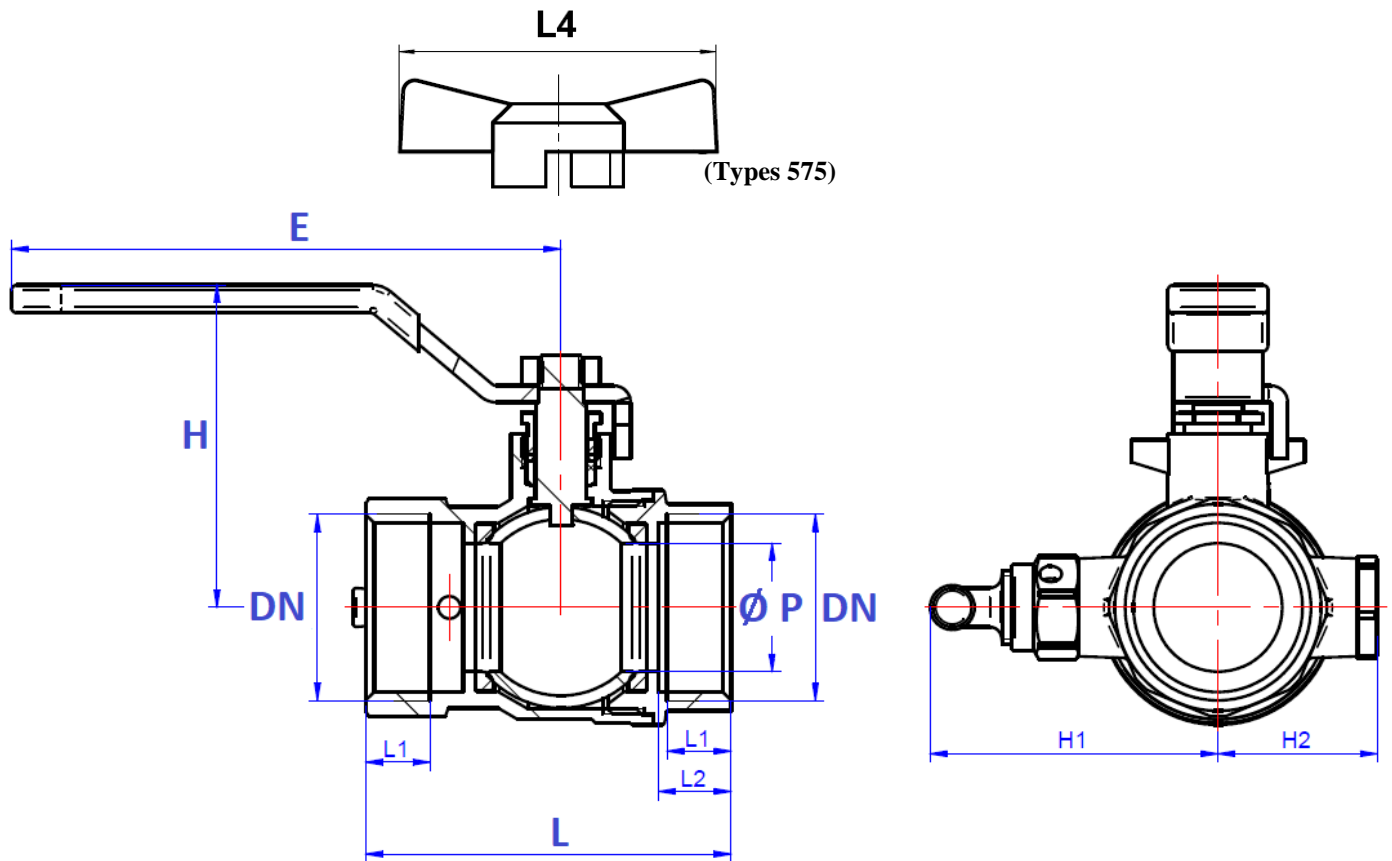
MALE / MALE SIZE Ref. 572 / 573 (in mm) :



Ref.	DN	3/8"	1/2"	3/4"	1"	1"1/4	1"1/2	2"
572 / 573	Ø P	10	13.5	18	23	27	36	45
	L	49	48	59	69.5	78.5	92	108.5
	L1	8.5	10	12	14	15.5	16	18
572	E	81	79		98.5	114.5	140	
	H	41.1	43.3	46.6	57.7	60.5	77.5	83
	Weight (Kg)	0.14	0.14	0.21	0.34	0.49	0.77	1.17
573	L4	50.5		50.5	63	-	-	-
	H	33.4	36.5	40	52	-	-	-
	Weight (Kg)	0.11	0.13	0.18	0.31	-	-	-

BRASS BALL VALVE ACS PN25 15S SERIES 4MS

FEMALE / FEMALE WITH DRAIN SIZE Ref. 574 (in mm) :



Ref.	DN	1/2"	3/4"	1"	1"1/4	1"1/2	2"
574 / 575	Ø P	13.5	18	23	27	36	45
	L	48	54.5	65.5	74	84.6	98
	L1	9.2	9.5	11.5	13	13.5	15
	L2	10.7	11	13	14.5	15	16.5
	H1	45.6	48.8	51.6	56.3	61.3	67
	H2	22.5	25.7	28.5	33.2	38.2	44
574	E	81		98.5	114.5	140	
	H	43.5	46.8	57.7	60.5	80.5	87
	Weight (Kg)	0.21	0.26	0.39	0.55	0.82	1.19
575	L4	50.5		63	-	-	-
	H	35.8	39.1	52	-	-	-
	Weight (Kg)	0.19	0.24	0.37	-	-	-

BRASS BALL VALVE ACS PN25 15S SERIES 4MS

STANDARDS :

- Manufacturer certified ISO 9001 :2015 and ISO 14001 : 2015
- DIRECTIVE 2014/68/EU : Products excluded from directive (Article 1, § 2.b)
- French water agreement **A.C.S. N° 19 ACC LY 468 (up to DN2"1/2)**
- Threaded male and female BSP cylindrical ends according to ISO 228-1